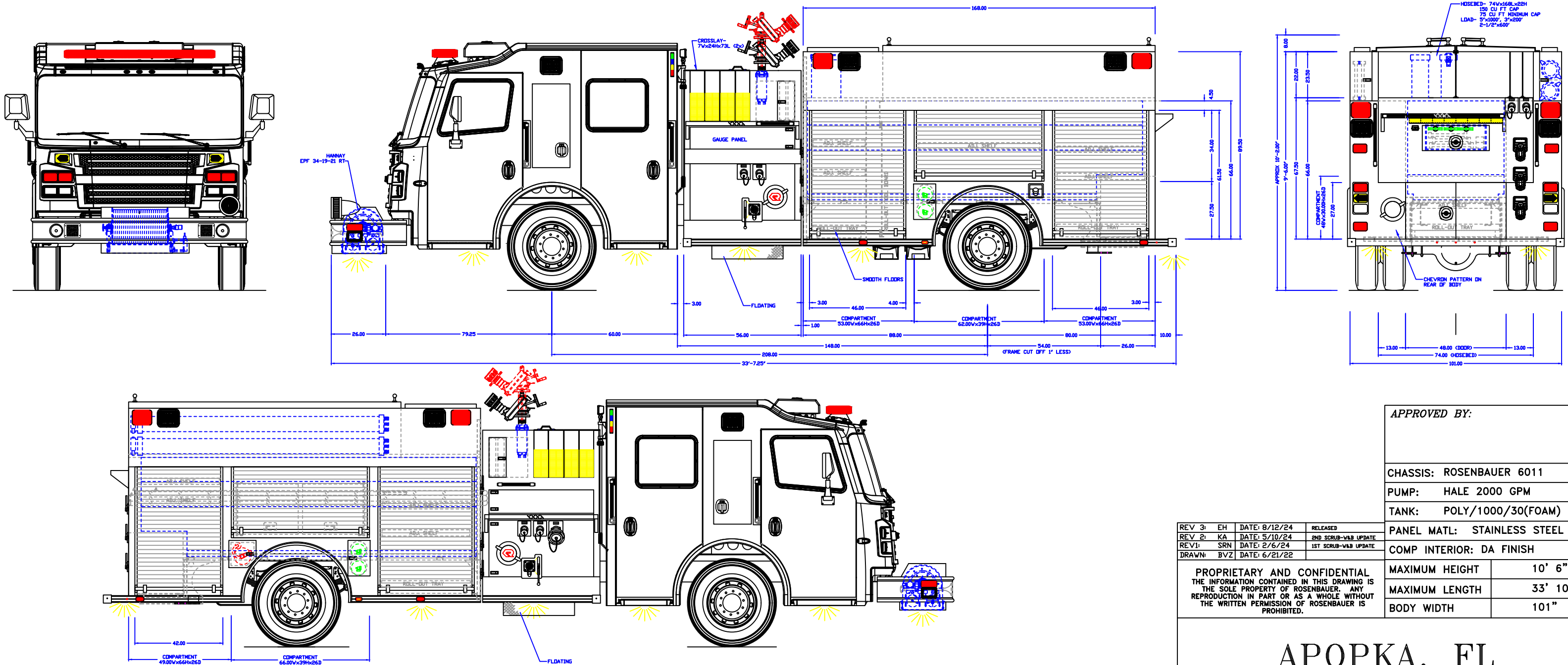


INITIALS: EH
 JOB NUMBER: 19224
 DATE: 8/12/2024

MAIN FILE: -
 DEPT: -
 DEALER: -

PRODUCTION APPROVED

- NOTES:
1. OVERALL HEIGHT IS IN LOADED CONDITION. UNLOADED HEIGHTS MAY BE 4" ABOVE HEIGHTS SHOWN.
 2. DO NOT SCALE DRAWING.
 3. ALL DIMENSIONS ARE APPROXIMATE AND SUBJECT TO ENGINEERING CHANGES.
 4. DRAWING MAY OR MAY NOT SHOW ALL ITEMS AS DESCRIBED IN THE WRITTEN DETAIL SPECIFICATIONS.
 5. INCLUSION OF AN ITEM ON THE DRAWING DOES NOT CONSTITUTE INCLUSION OF THAT ITEM WITH THE FINAL DELIVERED UNIT.
 6. THE EFFECTIVE DOOR OPENINGS WILL BE APPROX. 2" LESS THAN THE NOTED COMPARTMENT OPENING FOR ROLL UP DOORS AND UP TO APPROX. 4" LESS FOR HINGED DOORS



APPROVED BY:

CHASSIS: ROSENBAUER 6011
 PUMP: HALE 2000 GPM
 TANK: POLY/1000/30(FOAM)

REV 3:	EH	DATE: 8/12/24	RELEASED
REV 2:	KA	DATE: 5/10/24	2ND SCRUB-V&B UPDATE
REV 1:	SRN	DATE: 2/6/24	1ST SCRUB-V&B UPDATE
DRAWN:	BVZ	DATE: 6/21/22	

PANEL MATL: STAINLESS STEEL
 COMP INTERIOR: DA FINISH

PROPRIETARY AND CONFIDENTIAL
 THE INFORMATION CONTAINED IN THIS DRAWING IS
 THE SOLE PROPERTY OF ROSENBAUER. ANY
 REPRODUCTION IN PART OR AS A WHOLE WITHOUT
 THE WRITTEN PERMISSION OF ROSENBAUER IS
 PROHIBITED.

MAXIMUM HEIGHT	10' 6"
MAXIMUM LENGTH	33' 10"
BODY WIDTH	101"

APOPKA, FL



ROSENBAUER FX 3/16"

DRAWING NUMBER: APOPKA FIRE & RESCUE, FL REV 3